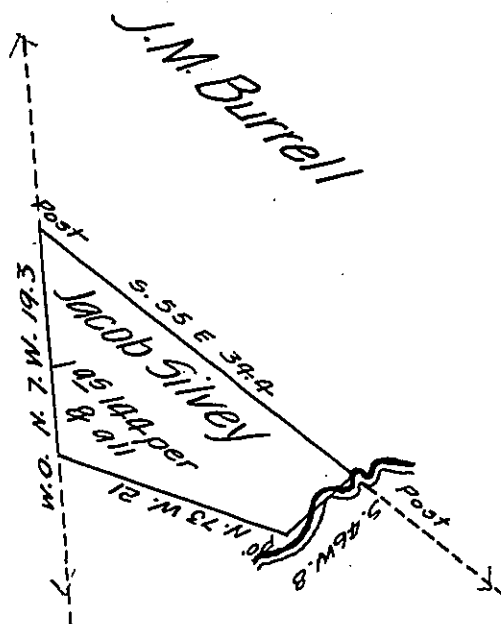


J.M. Burrell



James Murry's Claim

September 1st 1847

Surveyed the above described Piece of Land in Pursuance of a Warrant Granted to Jacob Silvey dated the 18th day of June 1847 Situate in Franklin Township Westmoreland County Penna containing One Acre and One hundred and forty four perches and the Usual allowance of Six per Cent &c.

To Hon. John Laporte Esq.                      George Meckling D.S.  
 Surveyor Gen<sup>l</sup> of Penna

IN TESTIMONY that the above is a copy of the original remaining on file in the Department of Internal Affairs of Pennsylvania, made conformably to an Act of Assembly approved the 16th day of February, 1833, I have hereunto set my Hand and caused the Seal of said Department to be affixed at Harrisburg, this twentieth day of March 1907

*Leach D. Brown*  
 Secretary of Internal Affairs.